



Structural Biology Theme

Wojtek Potrzebowski
Data Science Coordinator
SciLifeLab Lund

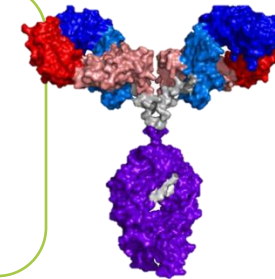
Structural Biology Theme



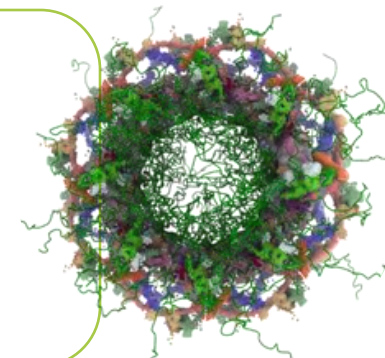
Integrated Infrastructure



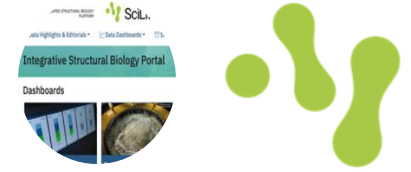
Pilot projects



Emerging science cases



Integrated infrastructure



Cross-platform data harmonization

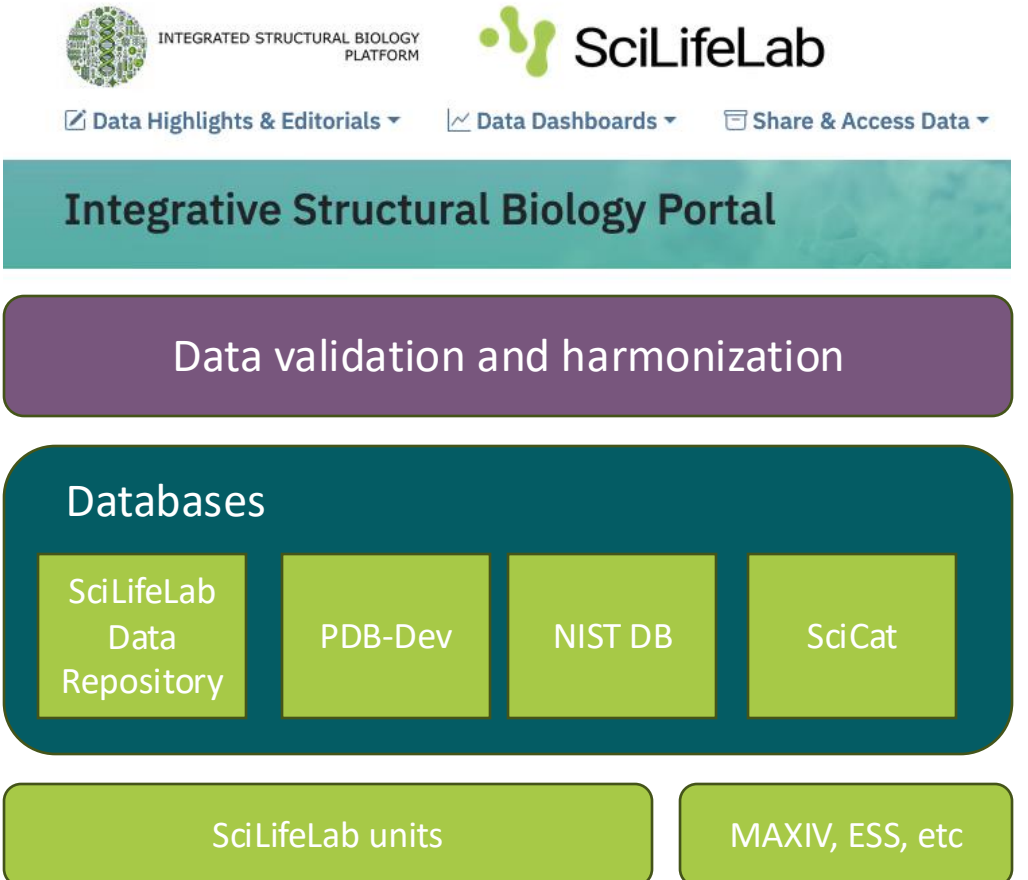


+External: e.g. ISB, LU-Fold, FragMax, MAXIV, ESS, EMBL

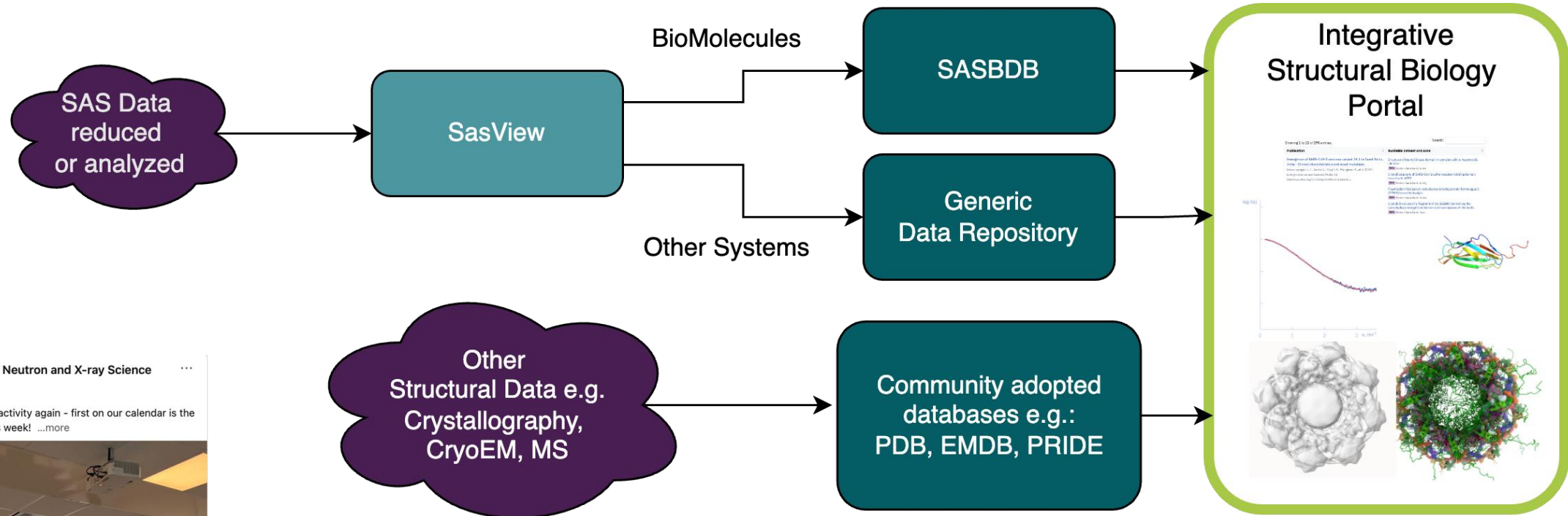
Synergies:



Community Portal

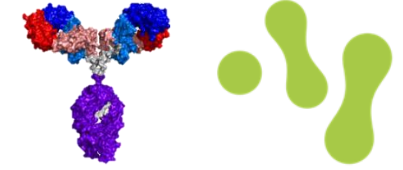


Example: Small Angle Scattering data



SasView Contributor Camp, Jan 7-11, 2025

Pilot projects



- Model systems
- Use data for computational method development
- Recommendation system/chat-bot

Synergies:



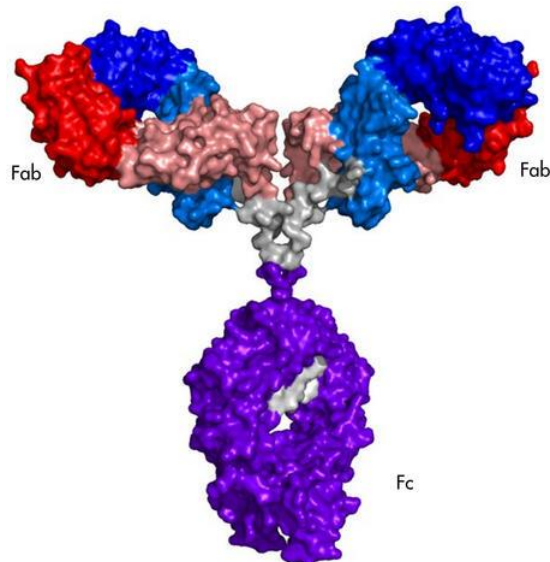
New Group Leaders

Training at SciLifeLab

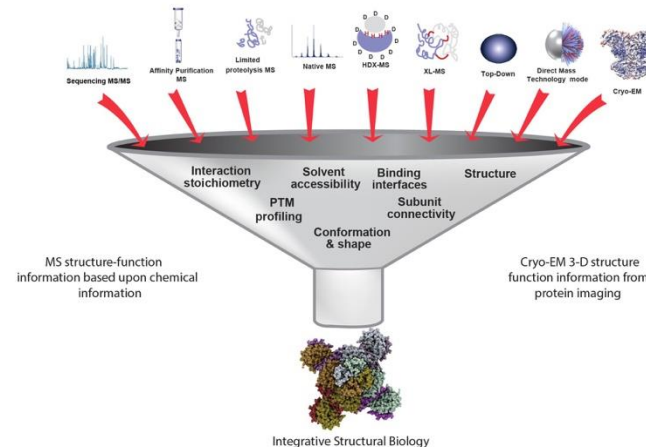
SciLifeLab is at the forefront of technology- and data-driven knowledge and offers training for current and potential SciLifeLab infrastructure users, such as PhD students, postdocs, investigators and other employees within all Swedish universities.

[Find And Book An Upcoming Course](#) ->

[Explore The Training Portal](#) ->



NISTmAb monoclonal antibody (LINXS)

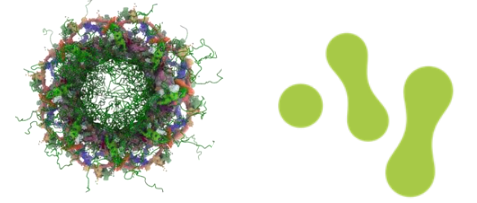


Multimodal analysis
www.thermofisher.com



Hej chat, I've collected X data with CryoEM. What method should I use to study dynamics?

Emerging science cases



- Community-driven, more challenging systems
- Exploiting full cross-platform potential
- Computational methods compensate for low structural information

- Synergies:

NBS



2-day workshop in Lund, late summer 2025



Main objectives

- Bring together key stakeholders from experimental and computational platforms.
- Define the technical and scientific requirements for the ISB Portal
- Engage with experts in multimodal data analysis
- Discuss pilot projects and emerging science cases

Tentative agenda

- Day 1
 - Keynotes
 - Cross-Platform Integration
 - ISB portal presentation
- Day 2
 - Multimodal Data Analysis
 - Case studies in ISB
 - Roadmap for future developments and collaborations

Organizers:

SciLifeLab Lund and ISB platform