

BIIF: Support on BioImage Analysis in Sweden



Support and Training for Image Data Analysis.

State-of-the-art analysis on image data using computer vision, machine learning, and bioinformatics.

Help to deploy computational methods.

Contact: biif@scilifelab.se



Anna Klemm
(UU)
Head of Unit



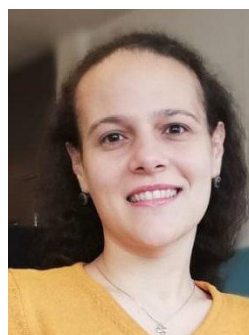
Christophe Avenel
(UU)



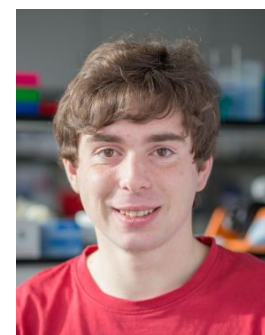
Fredrik Nysjö
(UU)



Carolina Wählby
(UU)
Scientific Director



Gisele Miranda
(KTH)



Jonas Windhager
(UU)
Starting April 2023

AIDA Data Hub



Kevin Smith
(KTH)
Scientific Director



UPPSALA
UNIVERSITET

Chan
Zuckerberg
Initiative



NBS
NATIONAL BIOINFORMATICS
INFRASTRUCTURE SWEDEN

**NATIONAL
MICROSCOPY
INFRASTRUCTURE**

Bioimage Analysis Sweden



SciLifeLab

Swedish National Research Infrastructure

- National center for molecular bioscience research
- 1500 persons with ~400 infrastructure staff
- E.g. Advanced Microscopy Unit, Spatial Omics Platform

NBIS

National Bioinformatics Infrastructure Sweden

- Bioinformatics support
- Access to cluster infrastructure
- FAIR data handling
- Training/workshops
- Sweden Elixir Node



NMI

National Microscopy Infrastructure Sweden

- Provide the life science research community with access to unique competence and instrumentation in microscopy.
- Swedish Eurobioimaging Node



BIIF - general statistics 2021/2022



FTEs: 3.5 (2021), 5.5 (2022)

Projects: 62

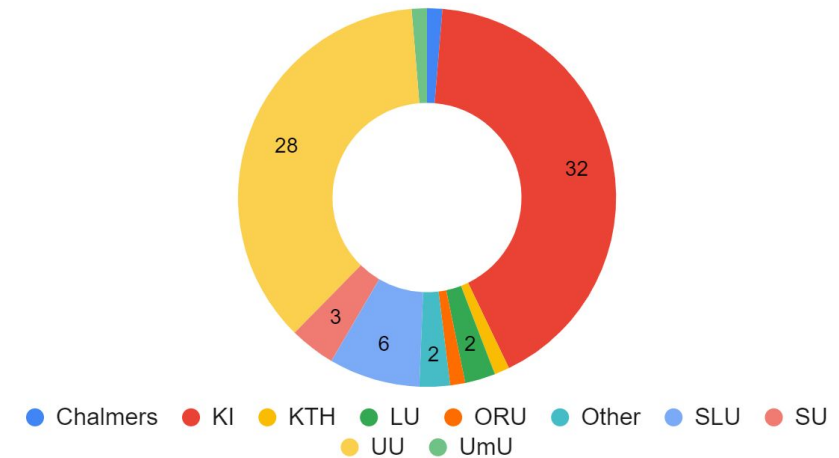
Publications: 20

Courses: 18 training events

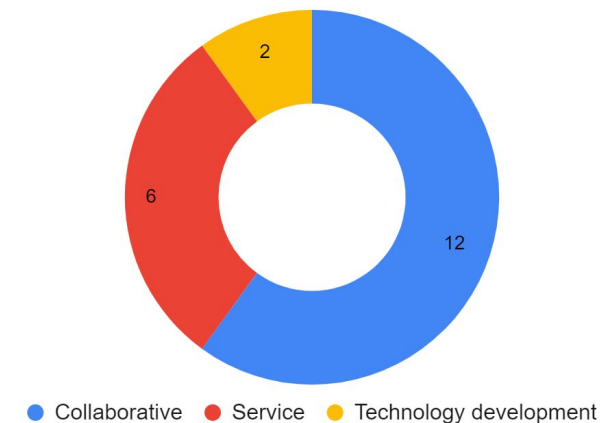
Focus area in this period:

Spatial and Single Cell Biology

Projects in 2021/2022



20 Publications in 2021/2022

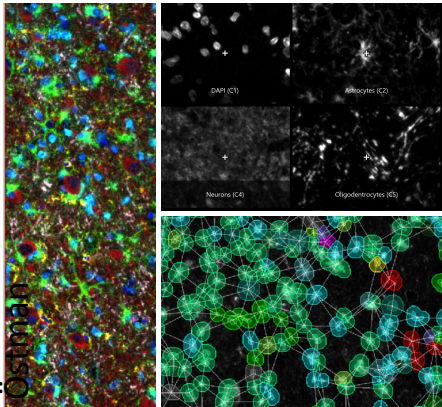


Projects - Support



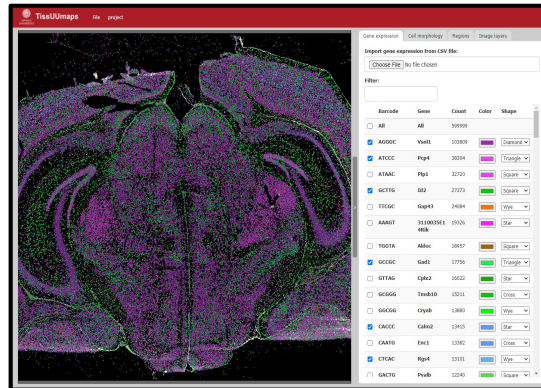
Multiplexed Tissue Analysis

Data: L. Wik, A. Österman



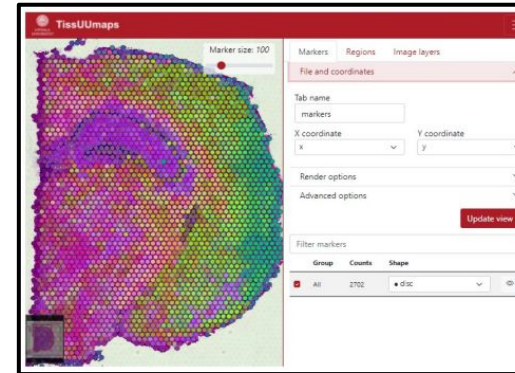
Cell segmentation
Cell classification
Spatial analysis
Automation

In-Situ-Sequencing

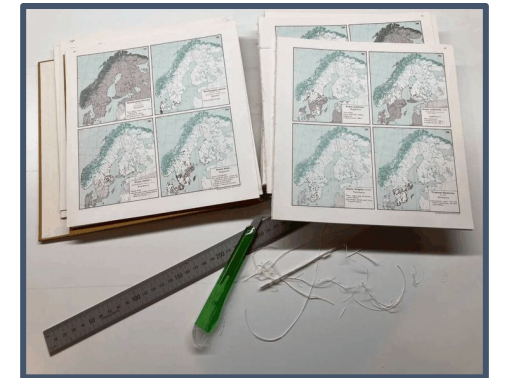


Raw data inspection
Cluster analysis
Visualization

Spatial Transcriptomics



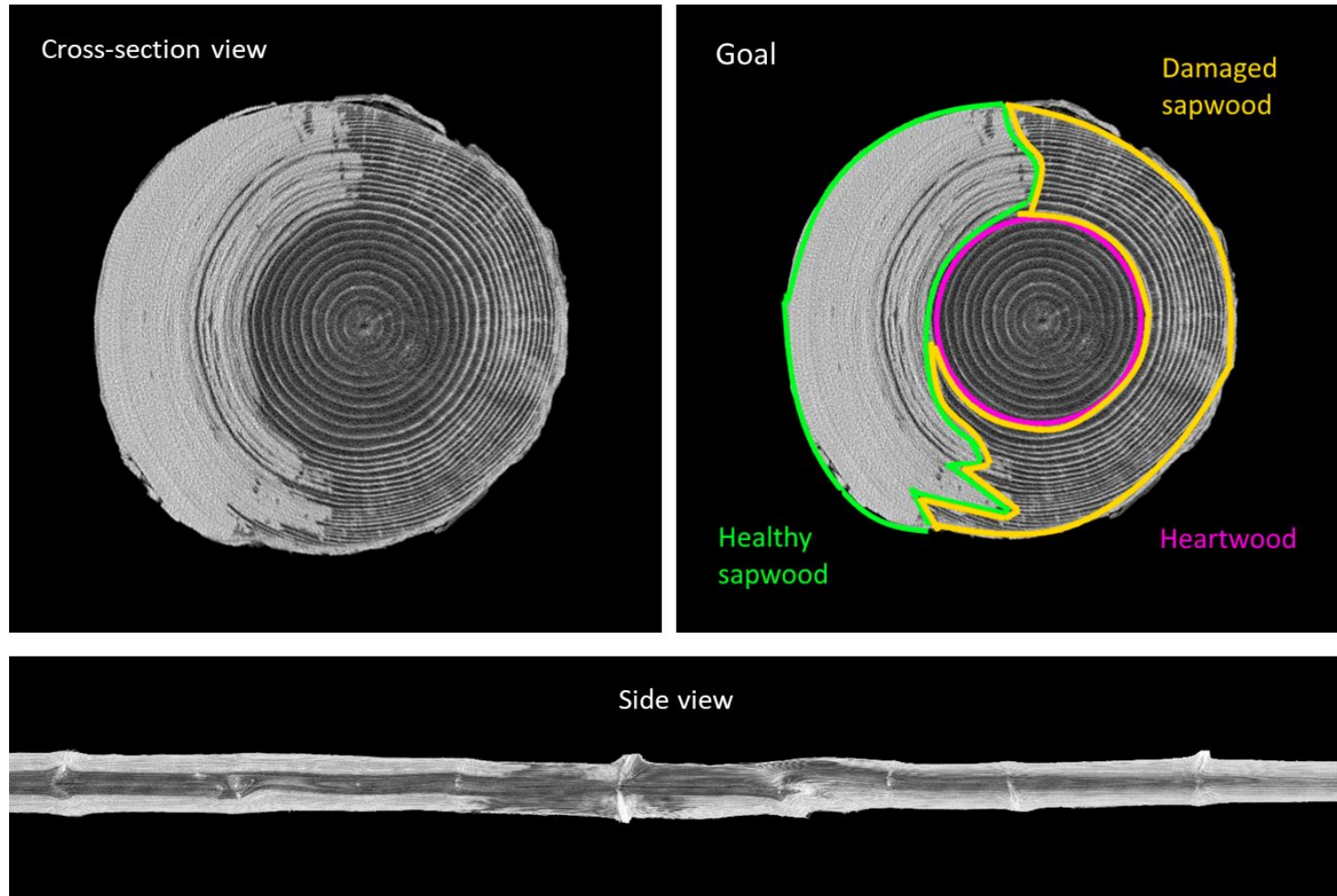
Cluster analysis
Visualization
Combination with
HE-stains



..and more!

Read more here:
biifsweden.github.io

CT-Tör 2: Detection of fungus damage in wood



BIIF Principal Investigators

- Fredrik Nysjö

External Authors

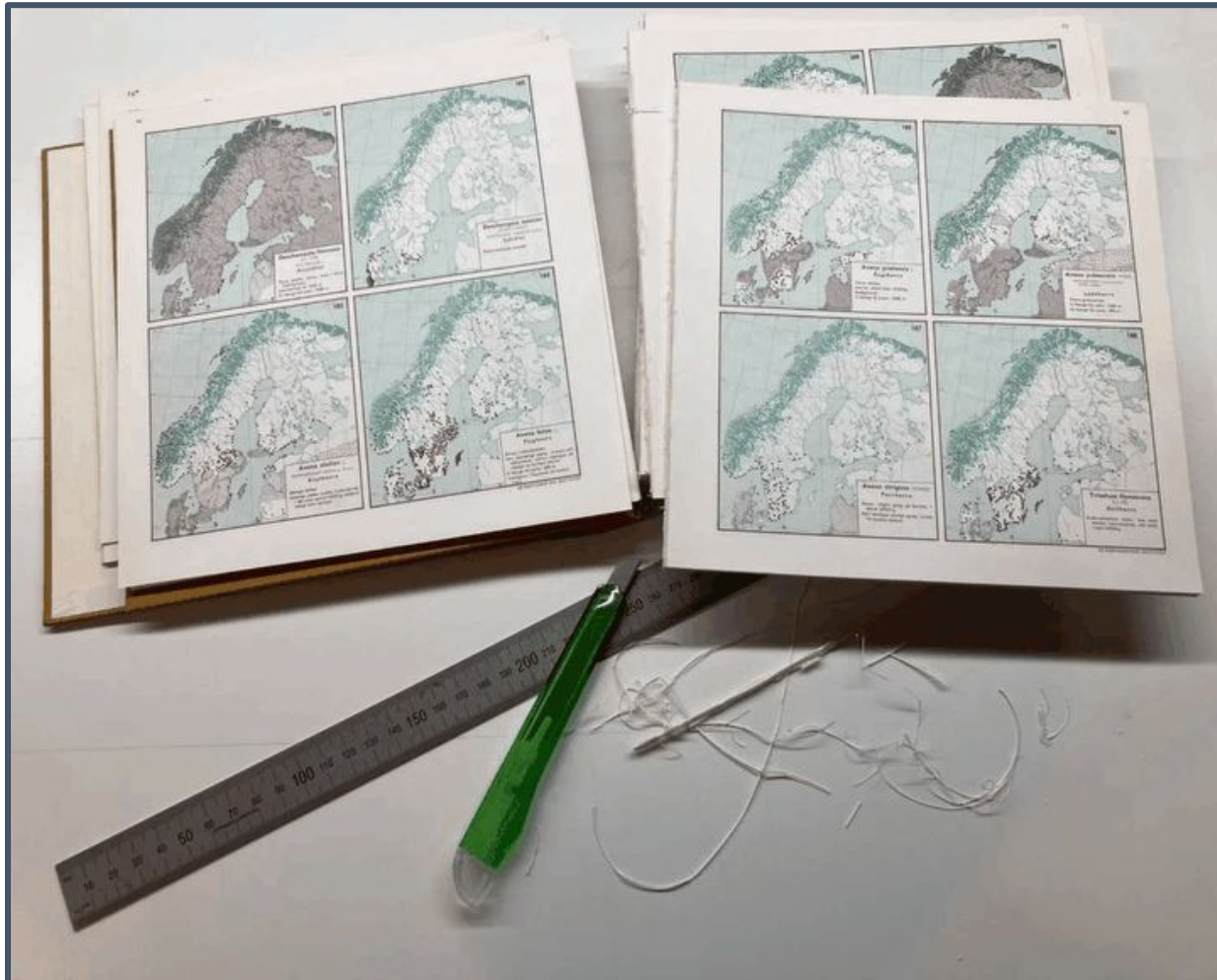
- Sheng Joevenller, Kari Hyl

read more:

<https://biifsweden.github.io/projects/2022/08/01/KariHyl2022-1/>

Funded by NBIS
Long-Term Support (KAW)

Digitizing historical range maps to estimate range shifts of Nordic vascular plants



BIIF Principal Investigators

- Christophe Avenel

External Authors

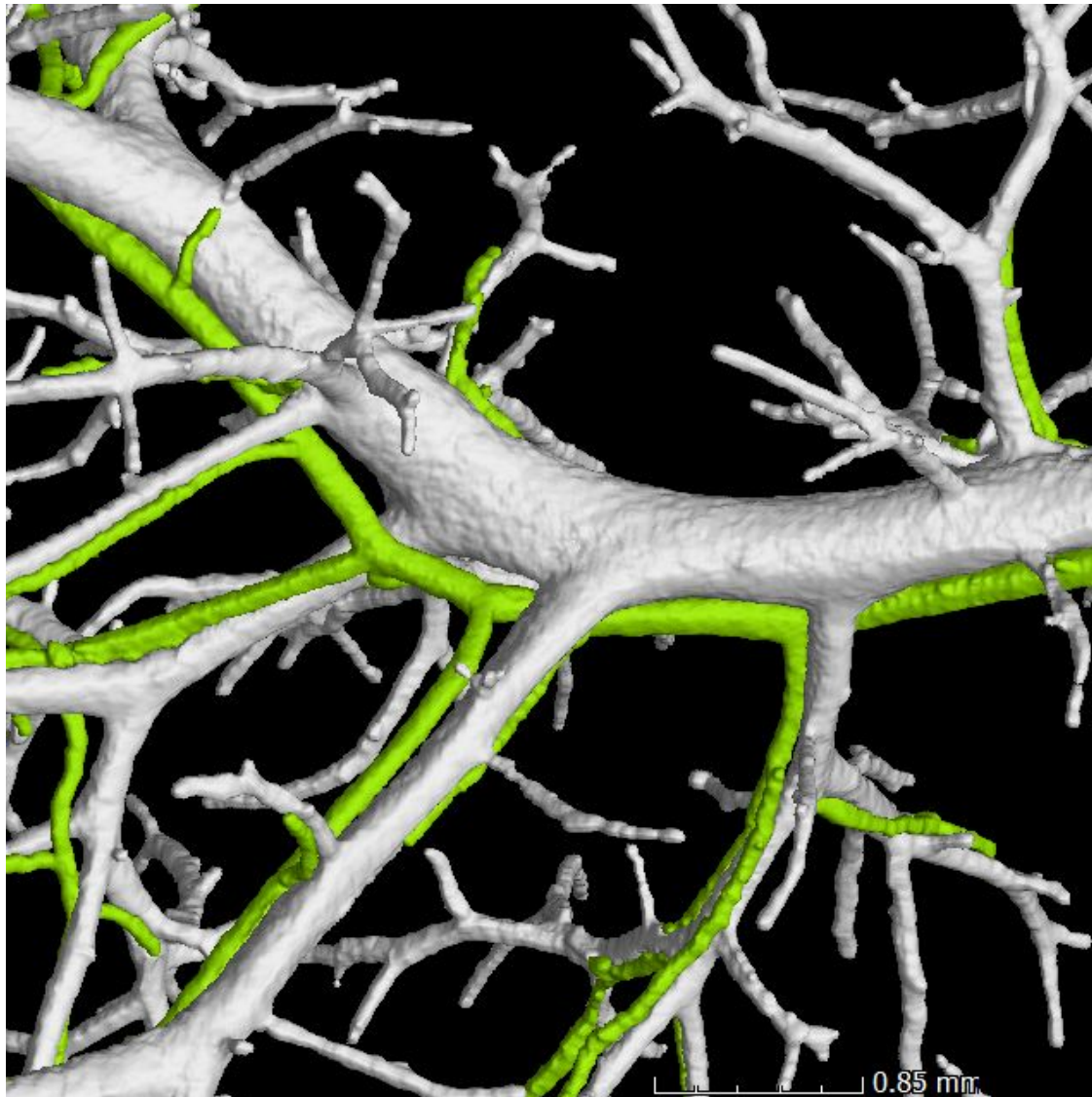
- Matilda Arnell,
Kristoffer Hylander
(SU)

read more:

<https://biifsweden.github.io/projects/2022/11/14/KristofferHylander2022-1/>



DoUble resin casting microCT (DUCT)



BIIF Principal Investigators

- Petter Ranefall
- Anna Klemm

External Authors

- Emma R. Andersson, Simona Hankeova, Department of Bioscience and nutrition, KI

read more:

<https://biifsweden.github.io/projects/2019/02/22/EmmaAndersson2019-1/>

Ways of Support



Free education

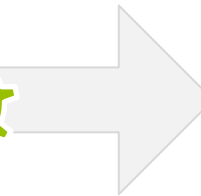
BIIF YouTube Channel
Open Course Material
Courses: coming soon
DIASA course

Free consultancy

Call4Help
1x per month
together with
Sylvie LeGuyader,
LCI

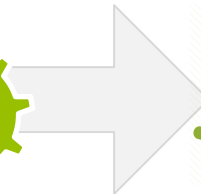
Support projects

Simple projects



Independent users

Typical projects

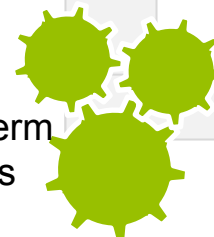


20h free support limit per PI

3. Free support

Education/development

Long term projects



4. Funded support

Academic & industry collaborations

Online resources



<https://www.scilifelab.se/units/bioimage-informatics/>

<https://biifsweden.github.io/>

Connected to:

[https://www.it.uu.se/about_us/divisions/vi3/research/quantitative microscopy](https://www.it.uu.se/about_us/divisions/vi3/research/quantitative_microscopy)