

# InfraLife

Infra Access for Life Science Sweden

A national initiative to maximize benefits of Sweden's large scale research infrastructures

Joint webinar InfraLife and Lif  
November 12 2021

Elin Jonsson, PhD, project coordinator InfraLife  
Josefin Lundgren Gawell, PhD, project coordinator InfraLife

Funded by:



## Infrastructures



## Partner organizations



# The infrastructures

## SciLifeLab (Science for Life Laboratory)

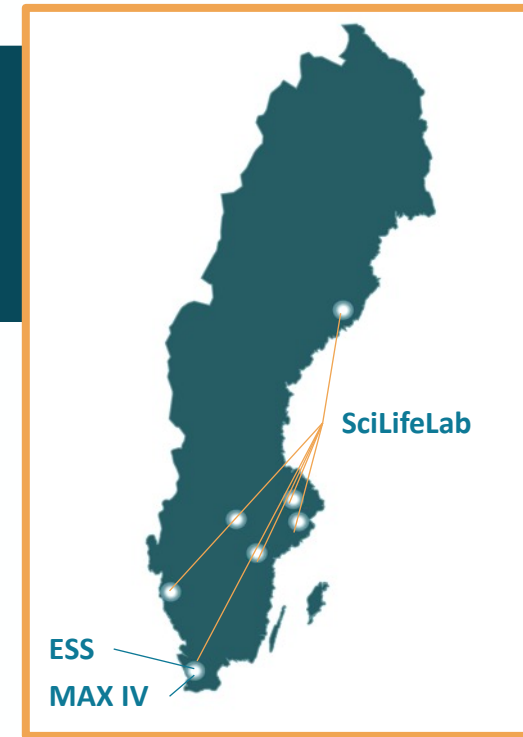
- National resource of more than 40 units and expertise available to scientists studying molecular bioscience.

## MAX IV

- National laboratory providing X-rays for research with specialized beamlines offering a wide range of experimental options to researchers in studying both soft and hard matter.

## ESS (European Spallation Source)

- European multi-disciplinary research facility based on the world's most powerful neutron source



# The InfraLife project group



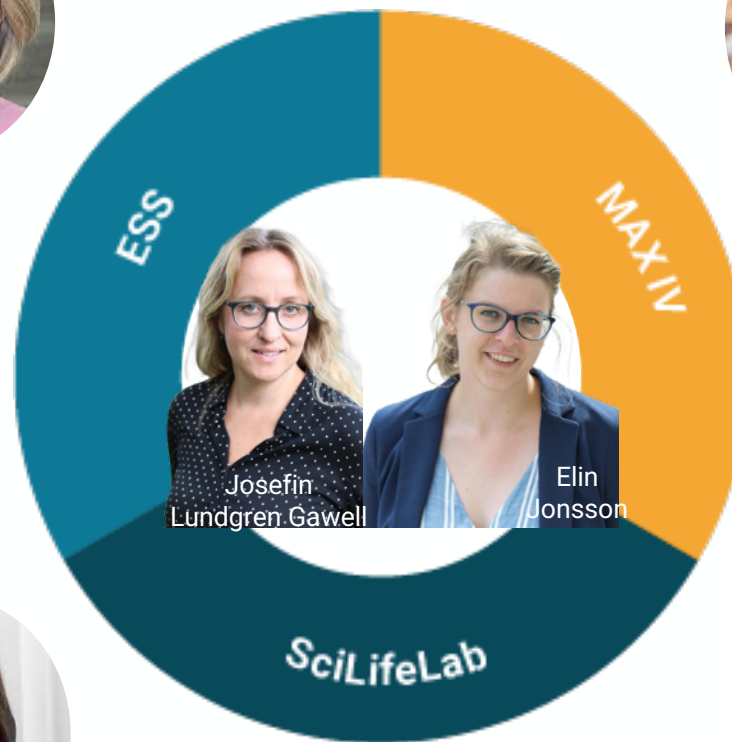
Pia Kinhult



Esko Oksanen



Sandra Falck



Josefin  
Lundgren Gawell

Elin  
Jonsson



Magnus Larsson



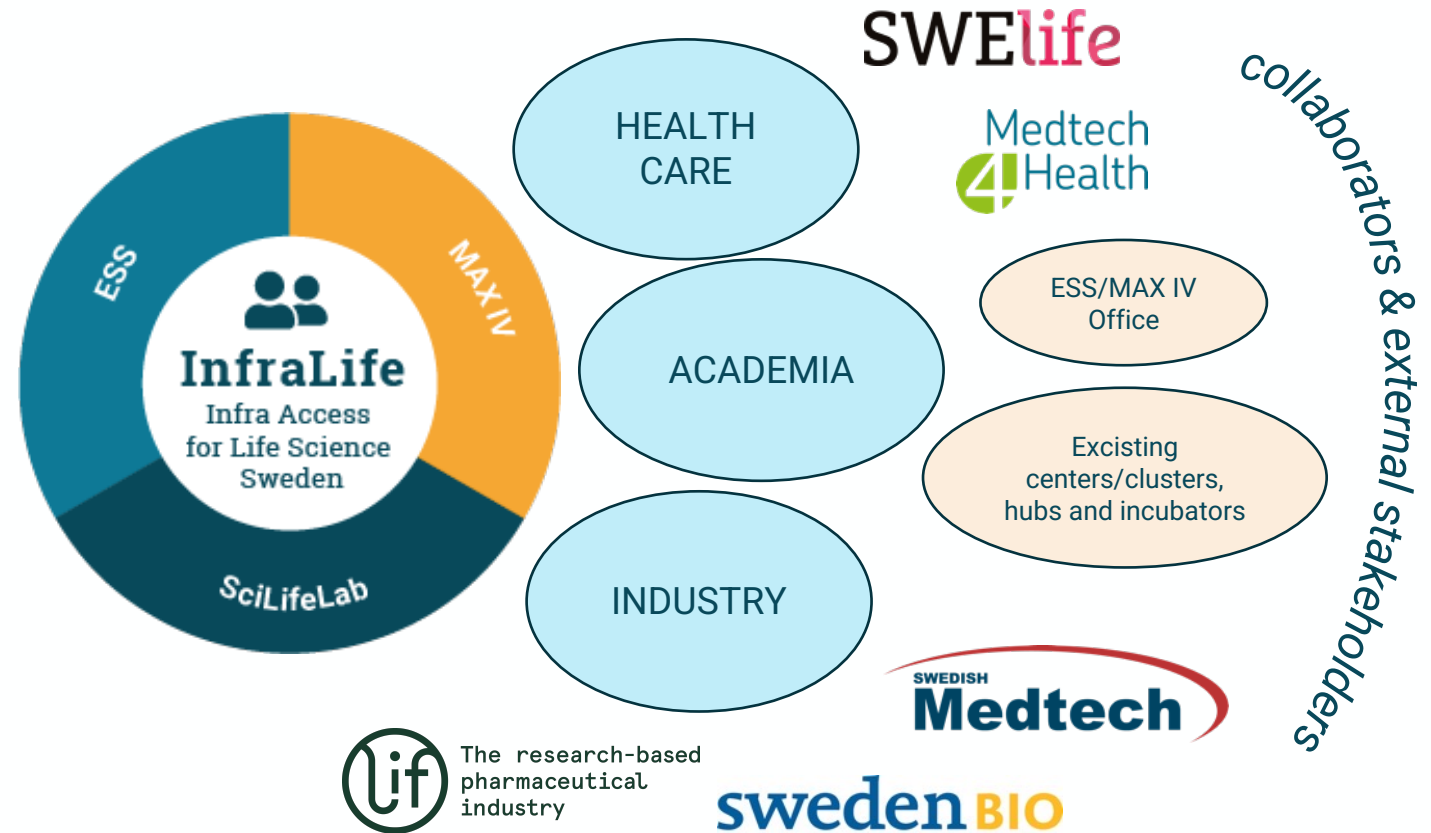
Selma Maric



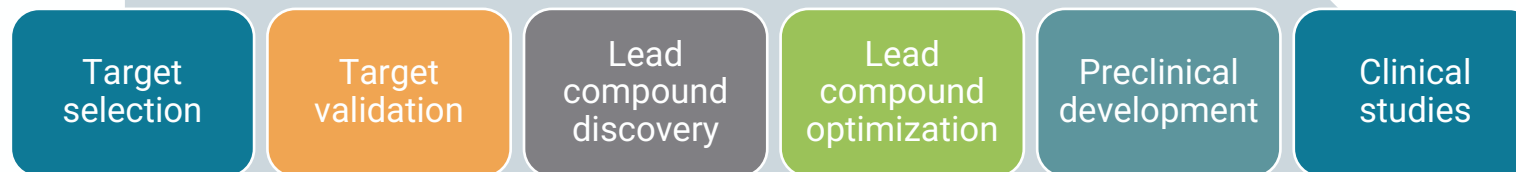
# InfraLife: Hub, context and aims

## InfraLife AIMS

1. Increased knowledge – communication and **educational activities**
2. New collaborations advancing science and tech development – challenge-driven multi-stakeholder **workshops**
3. Facilitated and coordinated **access** across sectors
4. **Data** – collection, management, sharing, FAIR principles



# Drug development & infrastructure





Thank you for joining!

Enjoy the webinar!

Connect with us!

## Infrastructures



## Partner organizations

